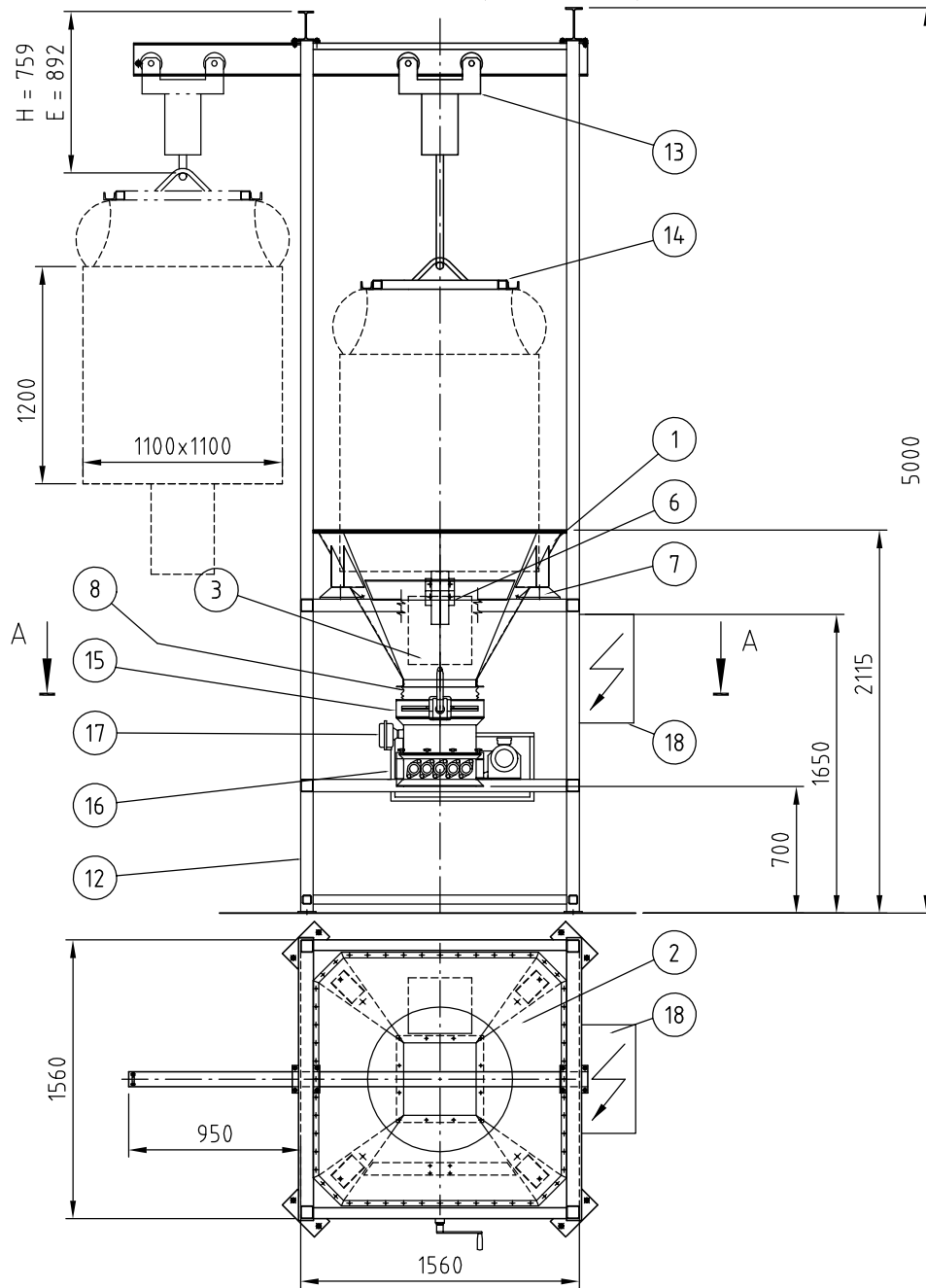
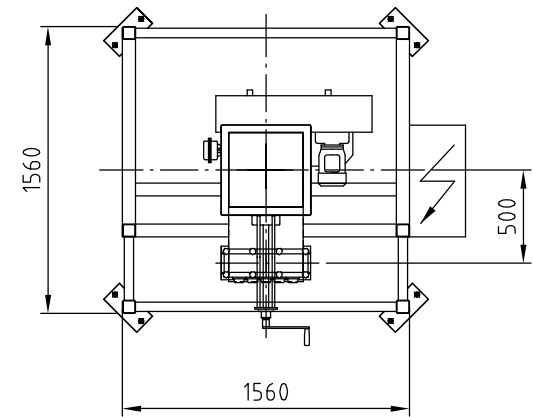


This drawing remains our property and may not be copied or passed on to a third party without our written permission. We reserve the right for changes at any time without previous notice.



A - A



18	1	Electrical cabinet			
17	1	Empty level-/ Arch indicator			
16	1	Feeder	405		
15	1	Shut-off damper valve	400		
14	1	Yoke for hoist			
13	1	Hoist			
12	1	Stand for hoist			
8	1	Flexible connection			
7	4	Vibration damper			
6	1	Vibrator	HV 2/4 - 9		
3	1	Access door			
2	1	Rubber sealing cloth			
1	1	Big-Bag cone			

Def.No.	Qty	Denomination	Material	Modell or Dimension	Remark								
Constructed	HG	Drawn	HG	Copy	Controlled	TC	Standard	Approved	TC	Scale	1:40 - A4	Replaces	Replaced of

TOMAL [®] METERING SYSTEMS	Big-Bag Discharger type 1100 Stand for hoist Outlet 400x400, Resuable Big-Bag	010516	Date 2002-12-18
		Drawing No. 010516	

No.	Pcs.	Modification	Date	Intr.	Appr.